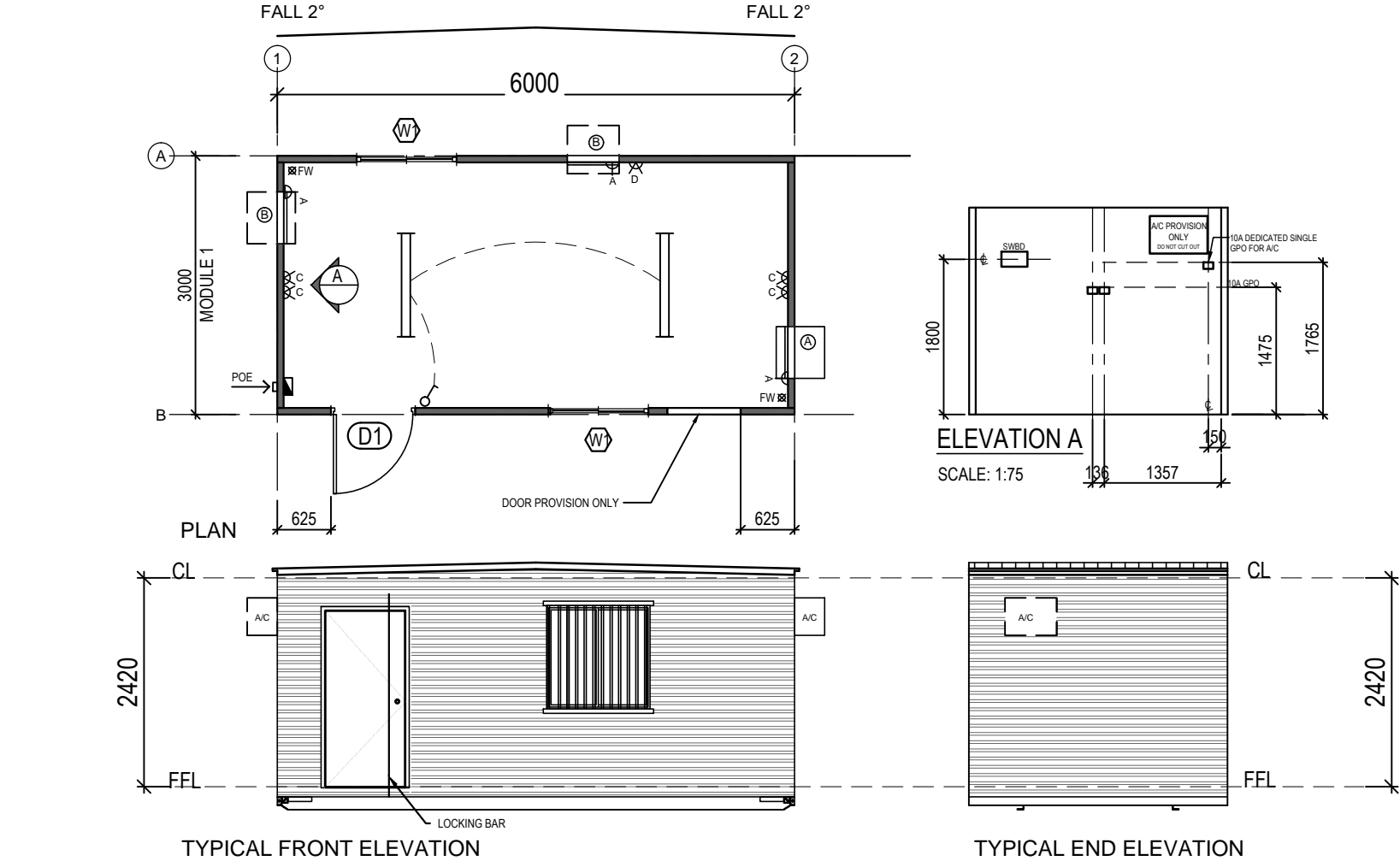


DESIGN SPECIFICATION		
BASEFRAME / REFER BASEFRAME LAYOUTS FOR DETAILS		
BEARER	150 x 75mm PFC, TOES OUT	
OUTRIGGER/SPREADER	100 x 50mm PFC	
BRACING ANGLE	50 x 50 x 5mm EQUAL ANGLE	
END MEMBER	100 x 50mm PFC	
LIFTING MECHANISMS	EXTENDABLE OUTRIGGERS	
TOW LUG	8mm PLATE / Ø30mm HOLE	
STEELWORK TREATMENT	FINISHED WITH ANTI CORROSIVE BLACK ENAMEL / TOW LUGS = CLARKE GREEN / LIFTING POINTS = SAFETY YELLOW	
FLOOR FRAME / REFER BASEFRAME LAYOUTS FOR DETAILS		
JOISTS	C10015 @ 480 CENTRES	
CAPPER	C10415	
END JOIST	100 x 100 x 4mm SHS	
FLOORING		
FLOOR SHEET	17mm TONGUE AND GROOVE PLYWOOD F11	
FLOOR COVERING	2.0mm VINYL - (SEALED) ARMSTRONG ARMATRANS NEUTRAL GREY	
SKIRTING	PVC D MOULD - GREY	
COMPLEXING	-	
WATERPROOFING	-	
OTHER	DRY FLOOR WASTES WITH PLUGS	
WALLS		
INTERNAL HEIGHT	2400mm	
INTERNAL LINING	4mm POLYPLY PRE-FINISHED EMBOSSED PLYWOOD - GREY	
INTERNAL TRIM	PVC D MOULD - GREY (GREY WAFER HD SCREWS)	
WALL INSULATION	R1.8 (75mm)	
EXTERNAL CLADDING	COLORBOND PANELRIB, LAID HORIZONTALLY - SURFMIST	
EXTERNAL CORNER	HD 40x40x2.5mm D'GAL ANGLE, SILICONE SEAL WALL TO FLOOR	
WALL FRAMES		
FRAMING	75 x 41 x 0.75mm G550 STEEL STUDS	
STUD SPACING	400mm CTS (WIND REGION N3)	
STRAP BRACING	WALLS TO FLOOR & WALLS TO CEILING STRAP BRACED EVERY 1200mm WITH 125 x 30 x 1.2mm BUILDERS STRAP - 8/18x20mm SCREWS x 4	
ROOF / CEILING		
CEILING TYPE	FLAT	
CEILING LINING	4mm PRE-FINISHED PLYWOOD - MIRAGE PEARL	
CEILING INSULATION	R1.8 (75MM)	
ROOF PITCH	2° CENTRE PITCH	
ROOF CLADDING	TRIMDECK 0.42 BMT - ZINCALUME	
ROOF INSULATION	-	
UNDER BARGE FLASHING	ZINC	
BARGE	WOODLAND GREY	
GUTTER	NIL	
DOWNPIPE	NIL	
STEPDOWN FLASHING	30 x 60 STEP DOWNS - WOODLAND GREY	
ROOF / CEILING FRAMES		
FRAMING	75 x 41 x 0.75mm G550 STEEL STUDS	
STUD SPACING	400mm CTS (WIND REGION N3)	
ELECTRICS		
SPECIFICATION	TO AS3000, 3001, 3012	
S/W BOARD	P.O.E. LOCATED BEHIND SWITCHBOARD, POLY PLASTIC INTERNALLY MOUNTED SWITCHBOARD, 1800mm AFFL(TO CTR)	
ITEMS & EQUIPMENT SCHEDULE		
TAG	QTY	DESCRIPTION
A	1	FRAME FOR A/C CUT OUT - 435h x 670w FRAME OPENING & FIT A/C SUPPLIED BY COATES HIRE
B	2	FRAMEOUT FOR A/C, DO NOT CUT
NOTES:	COATES SIGNS - 1 / PER BUILDING @ TOP RIGHT CORNERS	
	COATES ASSET TAGS - FIT BESIDE ENTRY DOOR @ LOCK	
	ALLOW NOGS IN CEILINGS AND EXTERNAL WALL FOR FUTURE PARTITIONS	



TYPICAL FRONT ELEVATION

TYPICAL END ELEVATION

GENERAL ARRANGEMENT

SCALE: 1:75

DOOR SCHEDULE											
TAG	SIZE	QTY	LOCATION	COLOUR	FURNITURE	LOCKING	KEYING	ARCHITRAVE	GLASS	CLOSER	STOP
D1	2040 x 920mm	1	EXTERNAL	SURFMIST	KNOB	PASSAGE SET	-	PVC	-	NIL	YES
NOTES: "DO NOT" REBATE BOTTOM OF DOORS FOR DOOR SWING TO MISS VERANDAH DECKING CABIN HOOK REBATED EDGE; SECURITY - ZINC PLATED PIVOT LOCKING BAR - BOTTOM OF BAR TO BE 5mm ABOVE DOOR THRESHOLD											
WINDOW SCHEDULE											
TAG	SIZE H x W	QTY	LOCATION	HEIGHT	OPENING	COLOUR	KEYING	ARCHITRAVE	GLASS	BLINDS	NOTES
W1	1200 x 1180mm	2	EXTERNAL	900 AFFL	1210 x 1190mm CUT-OUT	WHITE	-	PVC	CLEAR	NIL	TAPE & SILICON SEAL TOP SIDES. GAL. SEC. BARS BOLT FIX w/NYLOC NUTS @ 4 CORNERS

ELECTRICAL LEGEND			
ITEM	DESCRIPTION	HEIGHT	QTY
EDB	ELECTRICAL DISTRIBUTION BOARD	-	1
POE	ELECTRICAL SUPPLY POINT OF ENTRY	1800 AFFL	1
	2xSL 9732/40cw LED LIGHTS - SURFACE MOUNT	C/MNTD	2
	SINGLE LIGHT SWITCH	1300 AFFL	1
	SINGLE GPO - 10 AMP DOUBLE POLE	1765 AFFL	3
	SINGLE GPO - 10 AMP DOUBLE POLE	1765 AFFL	-
	DOUBLE GPO - 10 AMP DOUBLE POLE	1475 AFFL	4
	DOUBLE GPO - 10 AMP DOUBLE POLE	375 AFFL	1

coateshire

THIS SPECIFICATION TO BE COMPLIANT IN CONJUNCTION WITH THE COATES HIRE PURCHASE SPECIFICATIONS (PLANT) PART 2 - EQUIPMENT TYPE AND PART 3 - COMMON REQUIREMENTS WITH MBS MARK UPS DATED 21.06.17

FOR CONSTRUCTION

MBS

modular building systems

132 WARREN RD, SMITHFIELD

TEL: 1800 217 131

FAX: (02) 8718 2599

NSW 2164

D: (02) 8718 2500

PROJECT / TYPE :		PROJECT:		DATE :	TITLE :	
		COATES HIRE COMMONWEALTH GAMES 6.0 x 3.0m SHELL		15.01.2018		
SIGNATURE:				DRAWN BY :	PLAN- GENERAL ARRANGEMENT	
NAME:				TW		
DATE:				CHECKED BY :	DRAWING NUMBER :	BUILDING NUMBER :
				DT	MS-200108-101	#0000
				SCALE : SHOWN	QUOTATION NUMBER : 200108	REV : [1]

1	FOR CONSTRUCTION	TW	15.01.2018
ISSUE	AMENDMENT	BY	DATE